

vagle

Contents

Software installing Guide

02

Contents

03

Connection

04

Reccommend

5

Installing K-Lite Codec

06

Installing VR Player

09

Connect the LG 360 VR (R100)

10

Activates VR Player

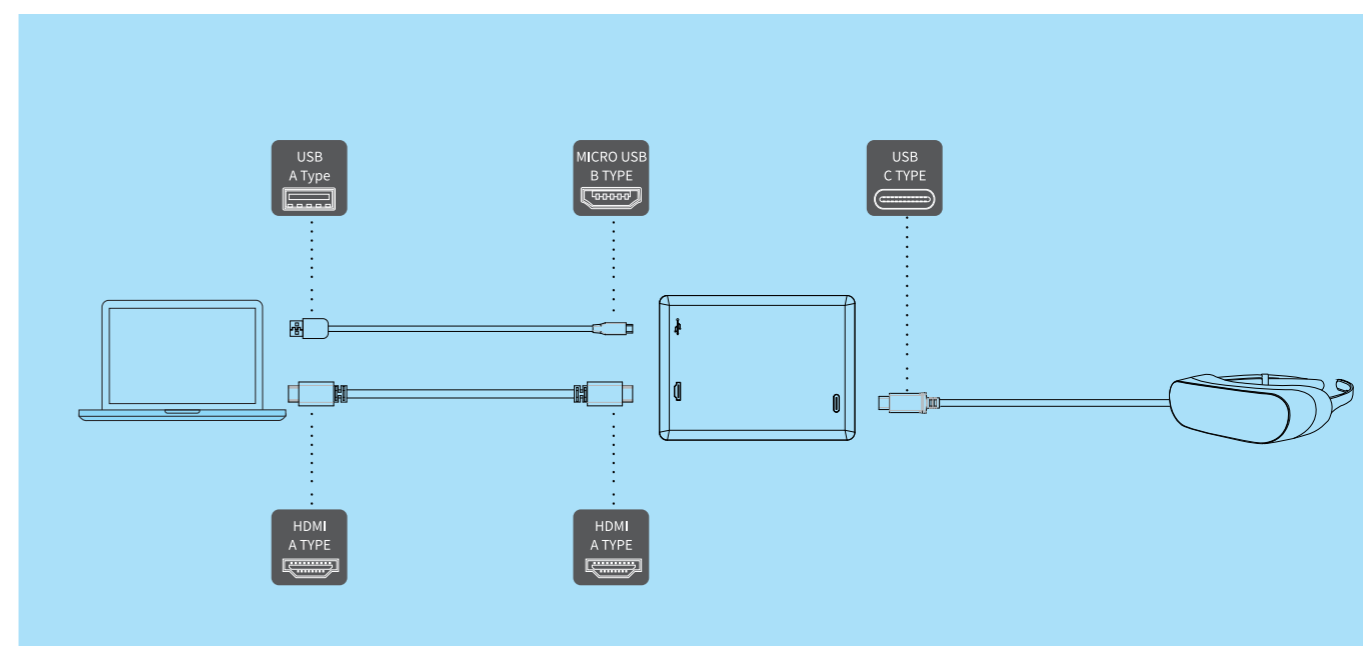
11

VR Display

12

Enjoy Youtube Video

Connection



Connect a HDMI cable to your laptop or desktop.

Connect the USB type C Digital AV multiport output plug in the VR Dongle to the USB Type C cable connected to the LG 360 VR (R100).

If you connect the USB 2.0 cable, it will automatically recognize the support resolution and output the best image to fit in the LG 360 VR (R100).

Run the VR Player and play the contents you want.

* When the player does not work well at the first connection, reconnect the USB 2.0 cable or USB Type C cable.

Recommended.

OS: Windows 7/8/8.1

Processor: Intel 2.5 GHz Dual-Core or AMD 3.0 GHz Dual-Core

Memory: 4 GB RAM

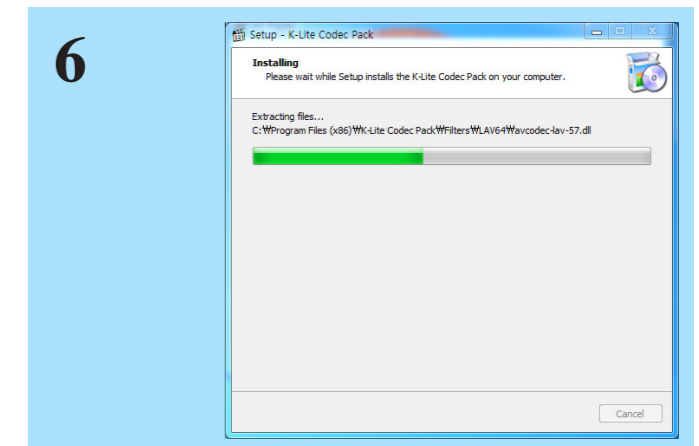
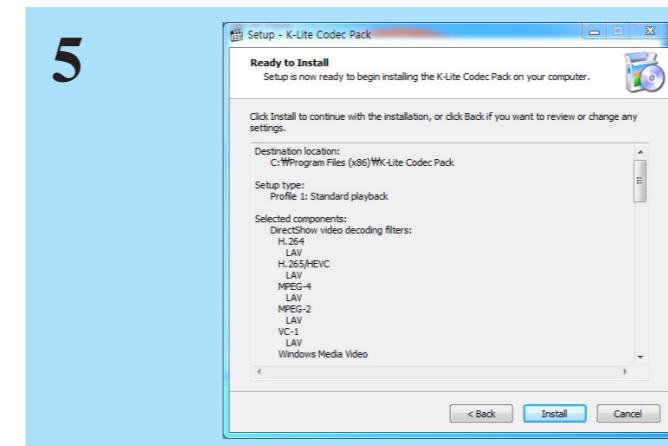
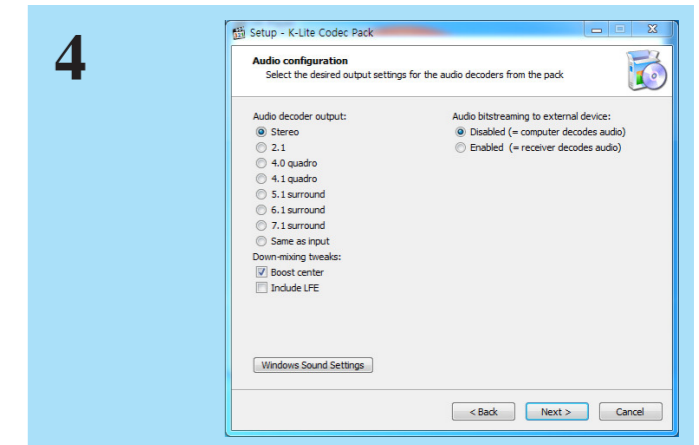
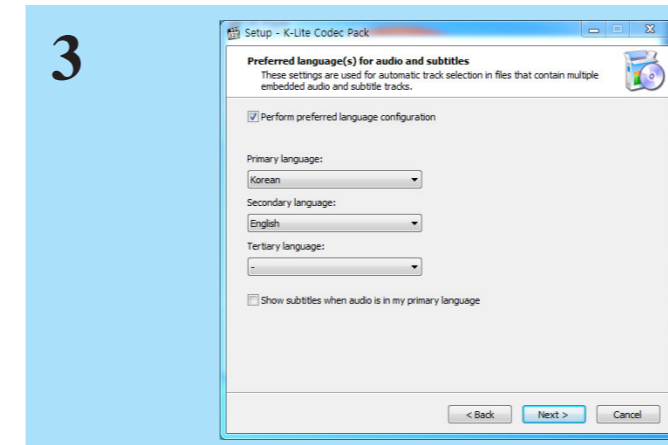
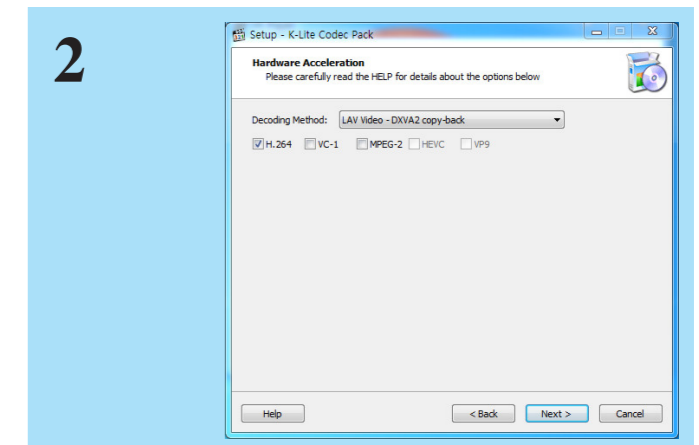
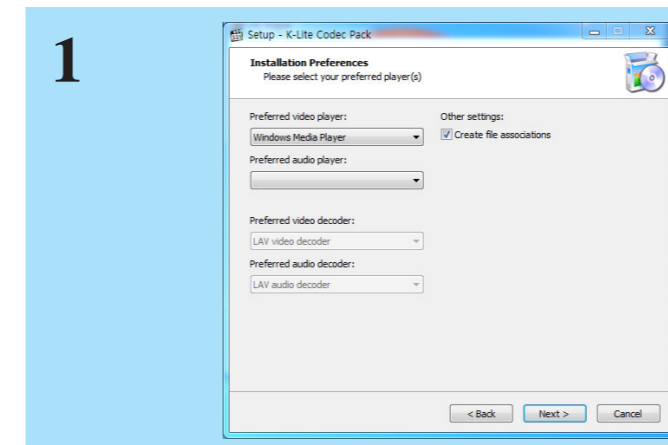
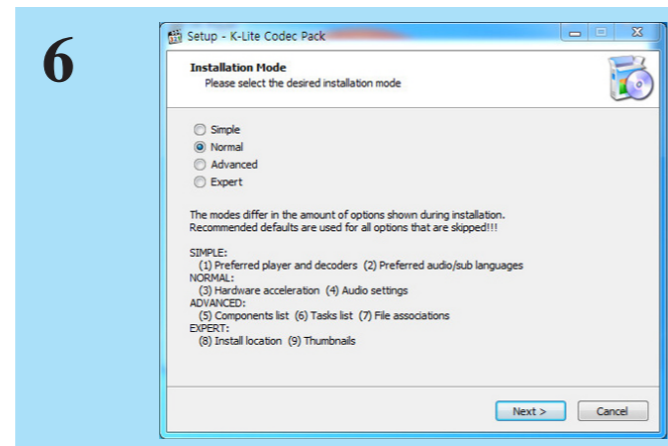
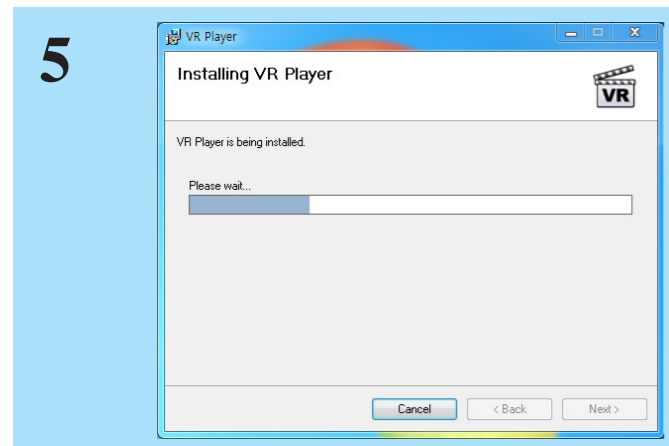
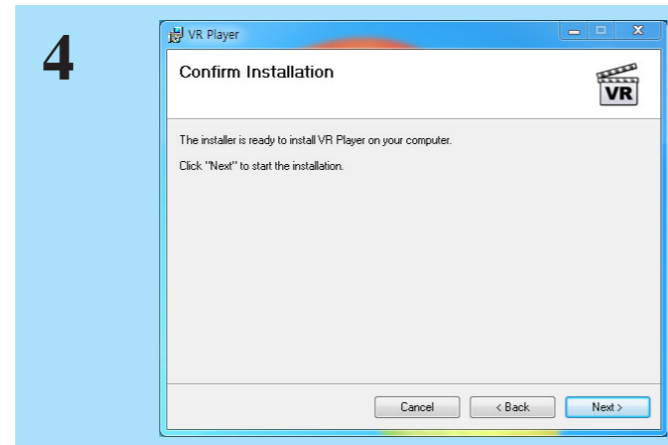
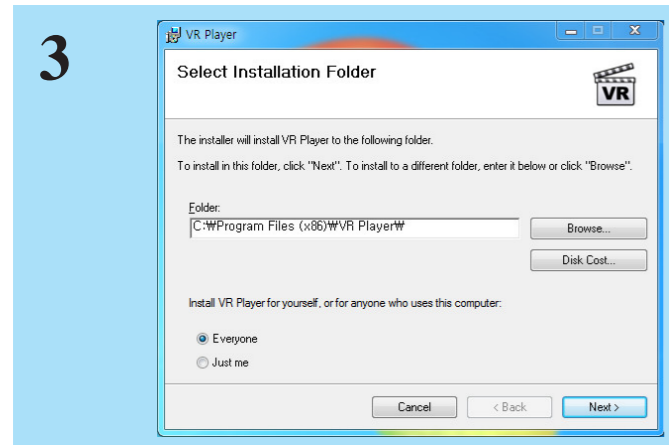
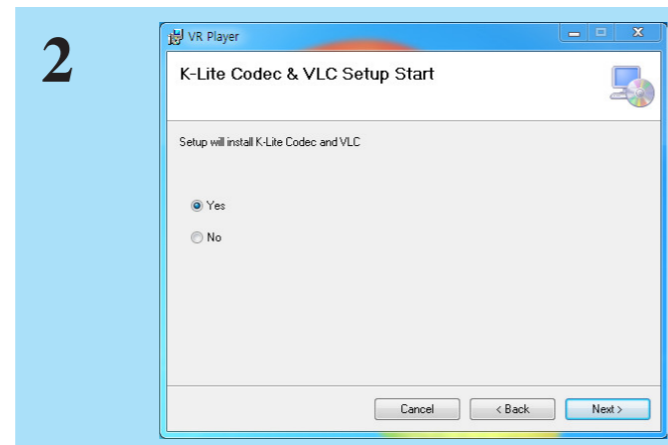
Graphics: DirectX 10 or OpenGL 3.2 compatible video card. Intel integrated graphics not supported.

Hard Drive: 250MB Free Space

Installing K-Lite Codec

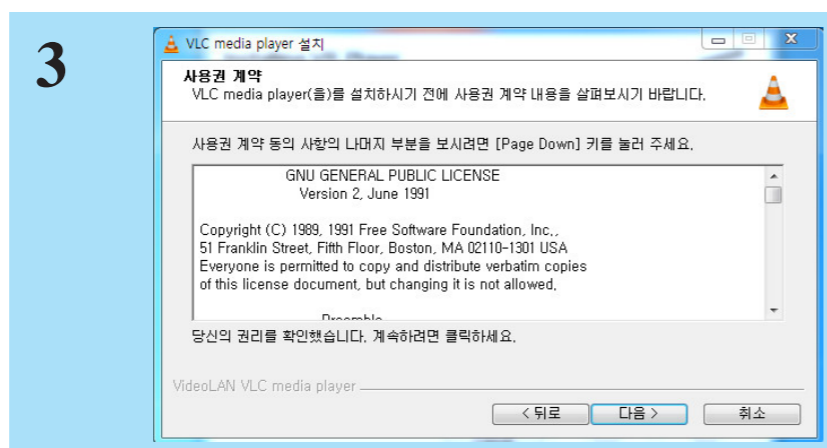
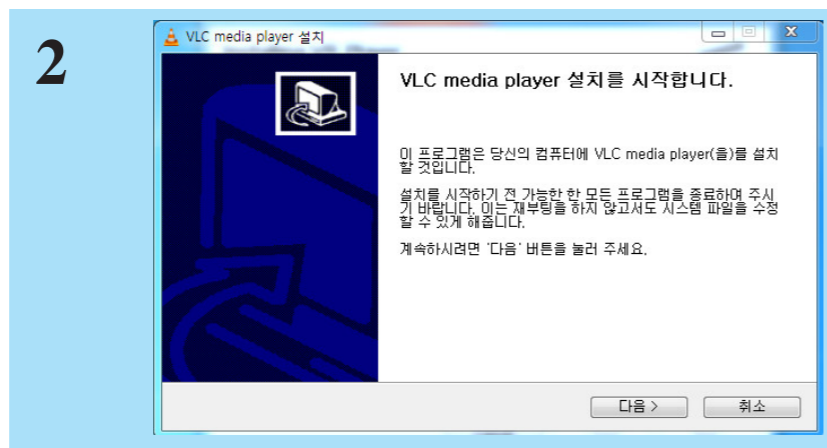
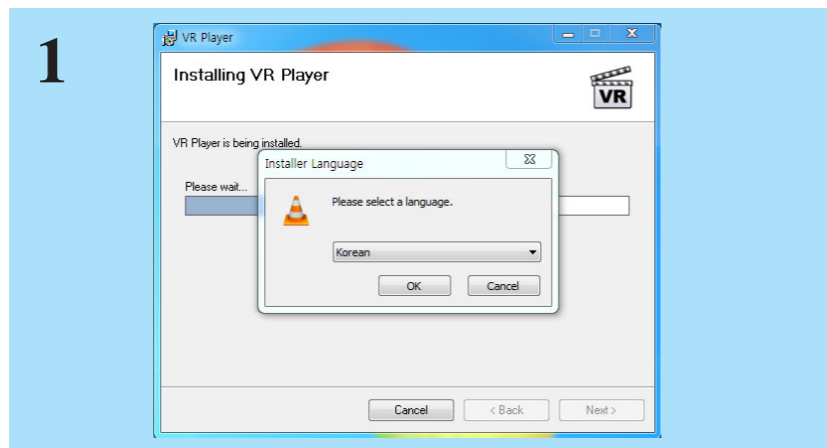
VR Player must be installed so as to use of K-Lite Codec and VLC Player.

When installed K-Lite Codec, you must set the Hardware Acceleration as illustrated below.



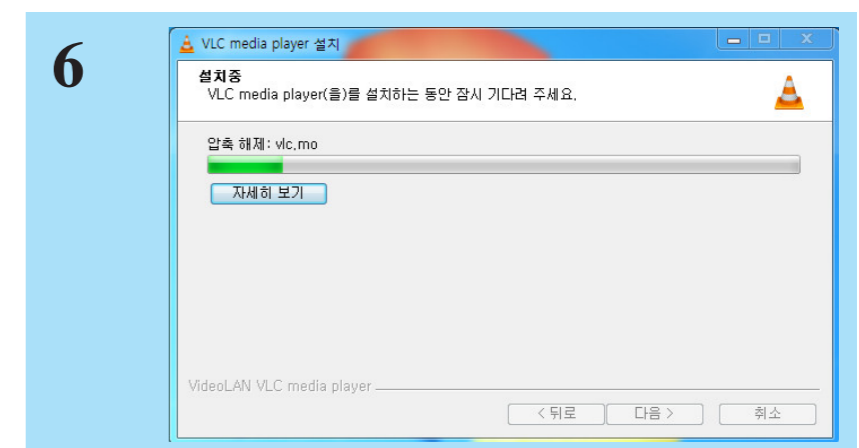
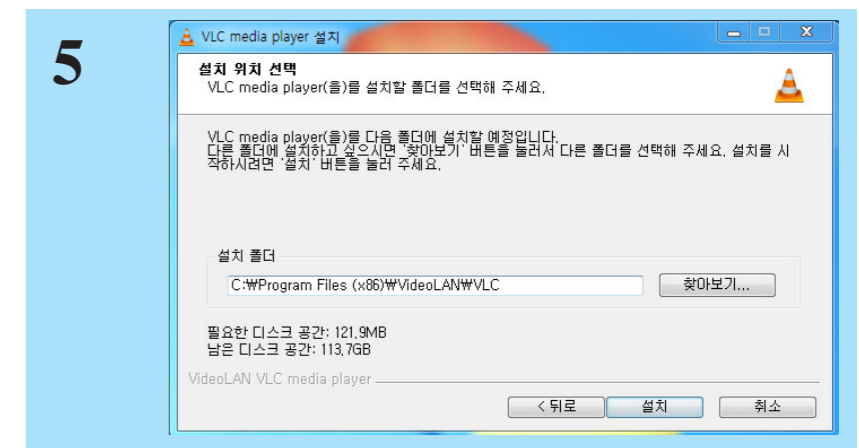
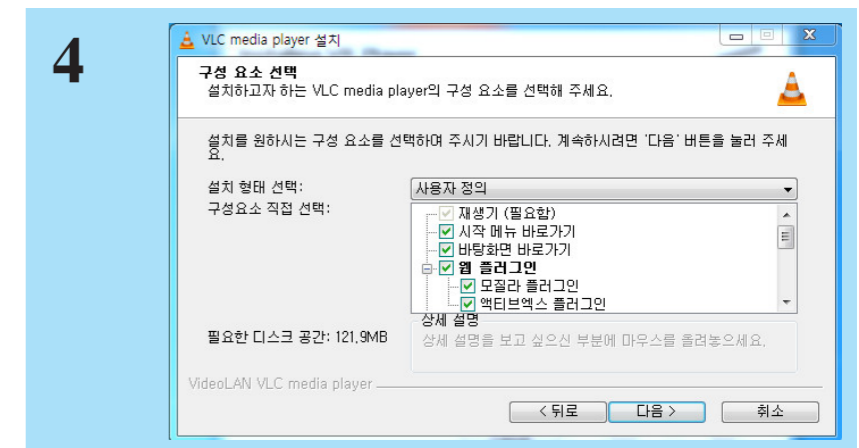
Installing VR Player

VLC Player is used mainly in the Stream menu.
In the File menu to play the video smoothly, please use the Direct Show.



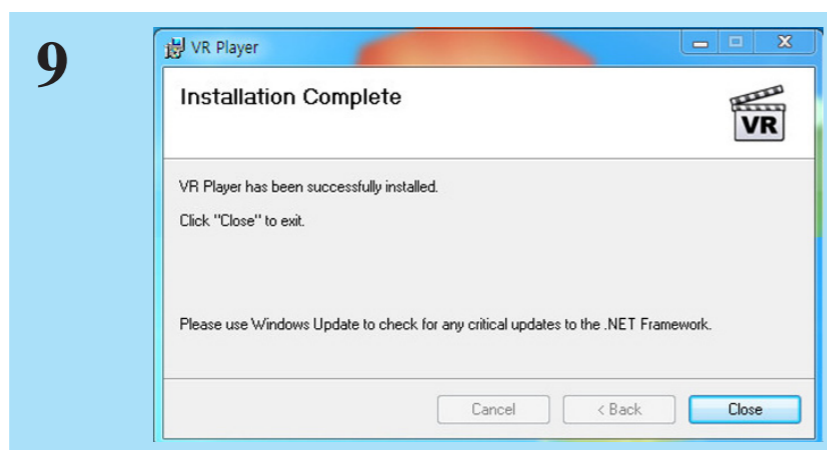
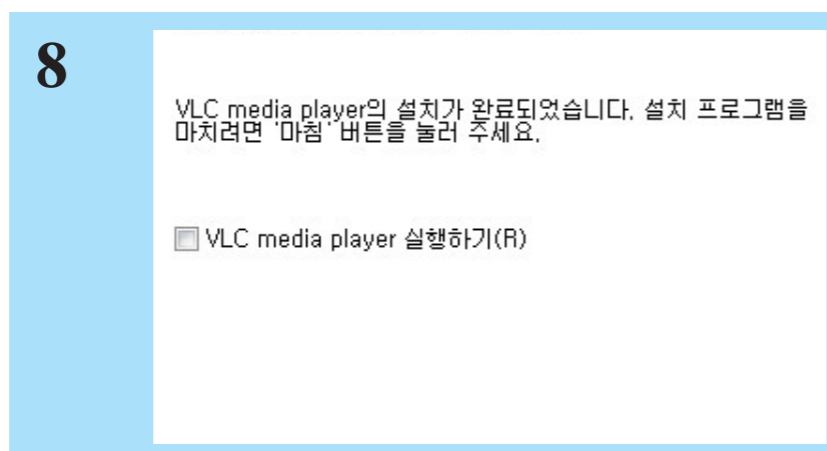
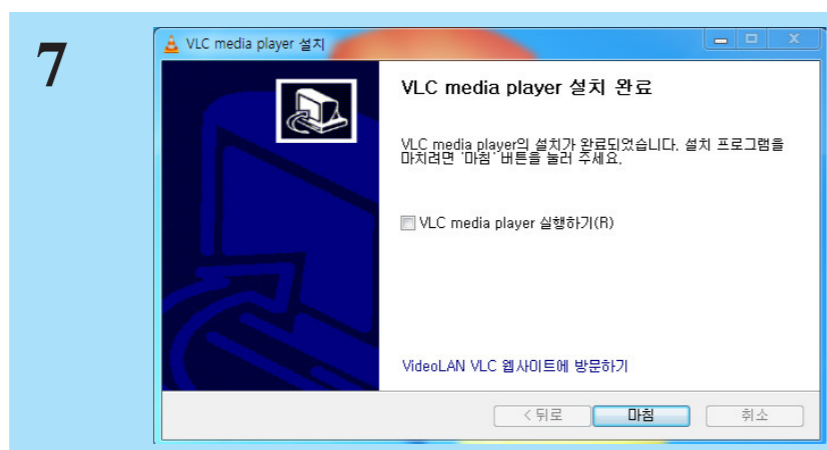
Installing VR Player

VLC Player is used mainly in the Stream menu.
In the File menu to play the video smoothly, please use the Direct Show.



Installing VR Player

VLC Player is used mainly in the Stream menu.
In the File menu to play the video smoothly, please use the Direct Show.

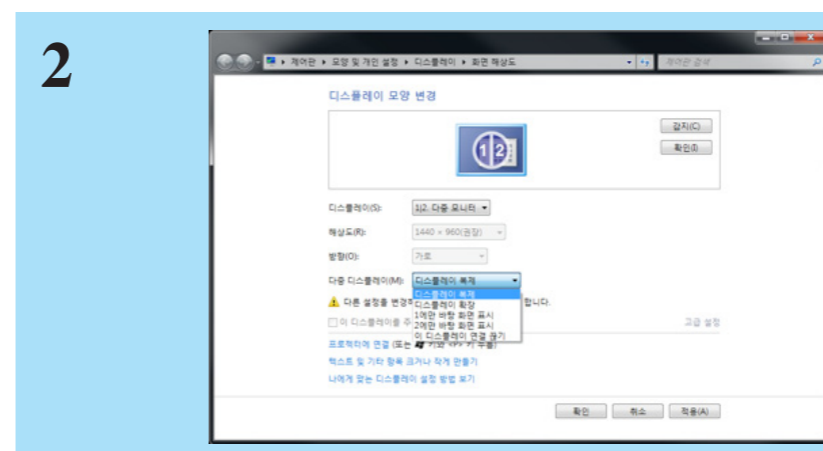


Connect the LG 360 VR (R100)

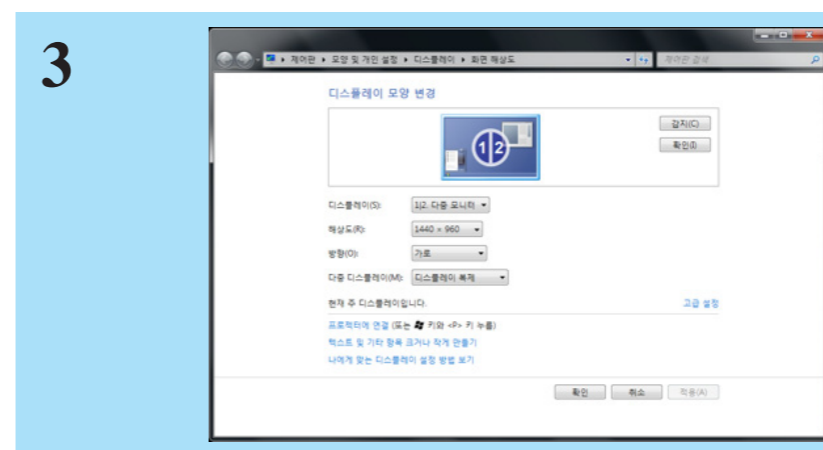
When you connect the LG 360 VR (R100), it will be recognized as a second display device



When you connect the LG 360 VR (R100) to your PC, it is recognized as a display device.



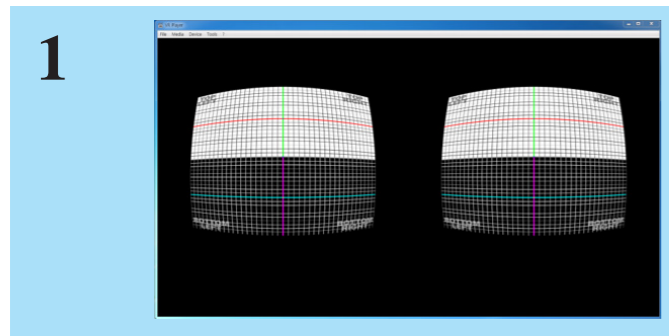
Select Display Clon.



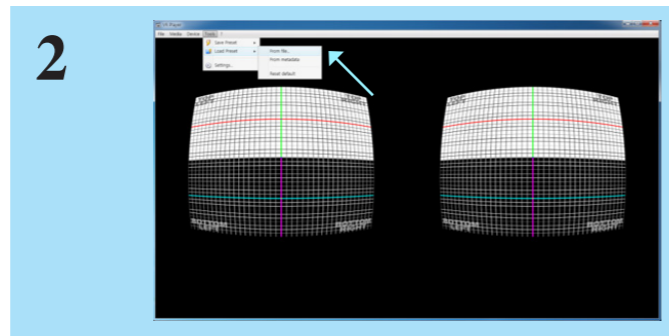
Screen resolution must be set to 1440 x 960 operates normally.

Activates VR Player

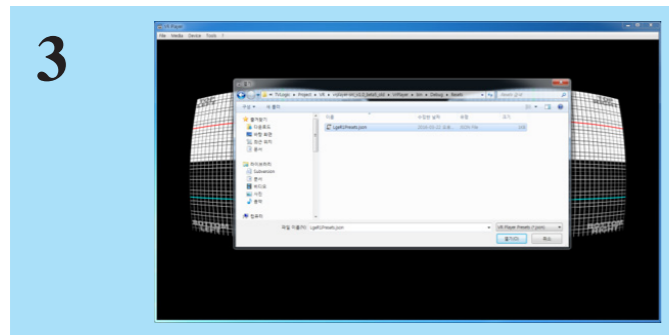
Open File menu uses the Direct Show, the Open Stream uses VLC.



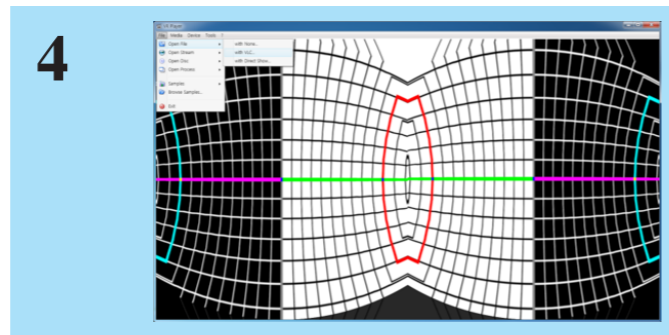
1 Activate VR Player.



2 Go to "Tools" and "Load Reset" then, select "from file..." from the menu bar.



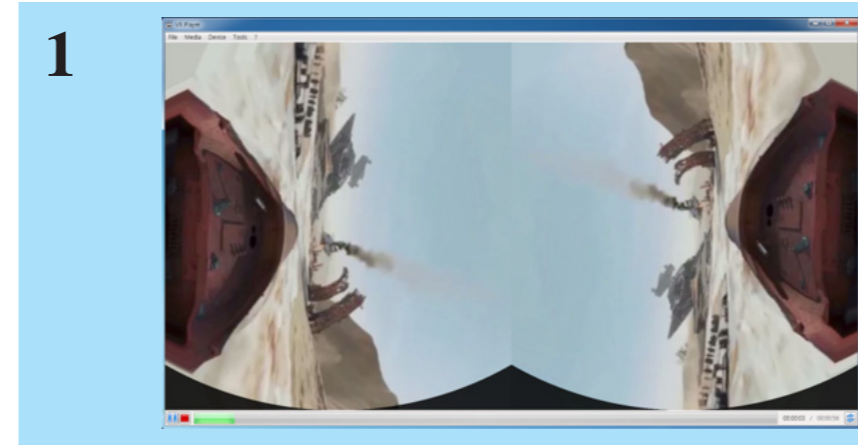
3 Select "LgeR1Preset.json" to set preference.



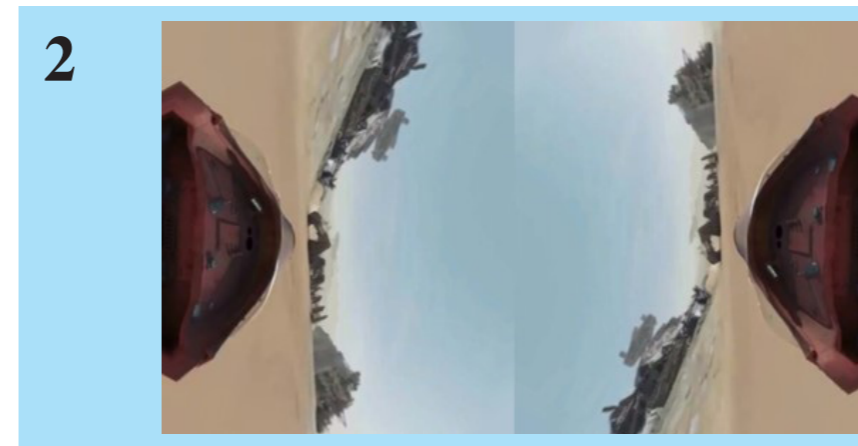
4 Select Video Clip that you want to play from "File" menu Use "With Direct Show"

VR Display

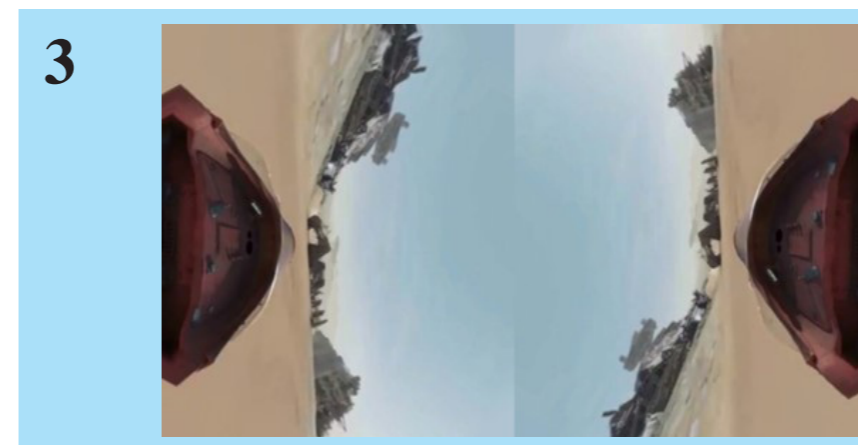
If your PC specification is lower than the recommended specifications and performance for notebook computers that use Intel integrated graphics may not play smoothly on the screen.



1 Video Clip will be activated.



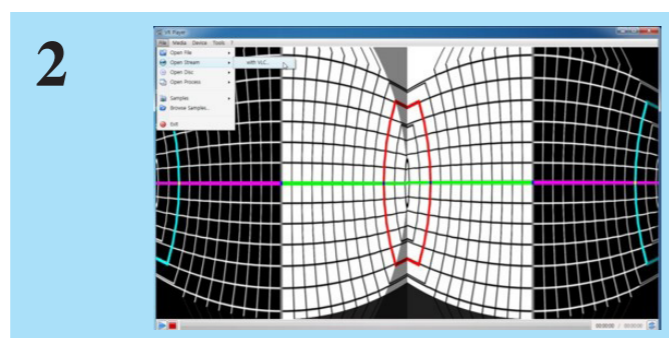
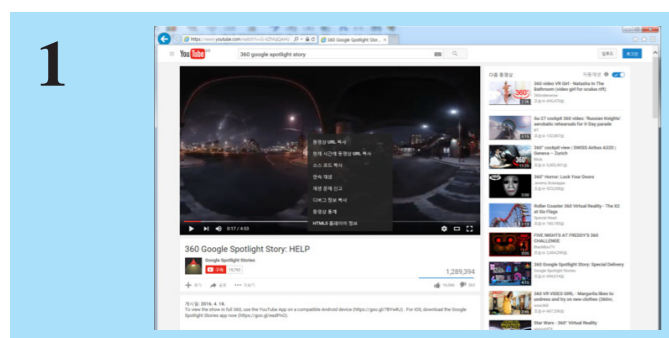
2 Double-click on the video screen with your mouse to play in full screen



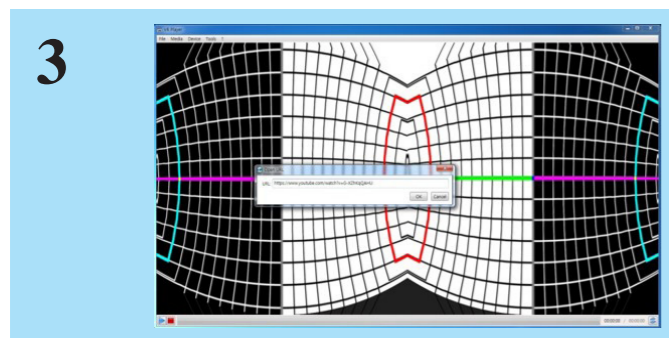
3 Please wear LG 360 VR (R100), you can see the VR display

Enjoy Youtube Menu

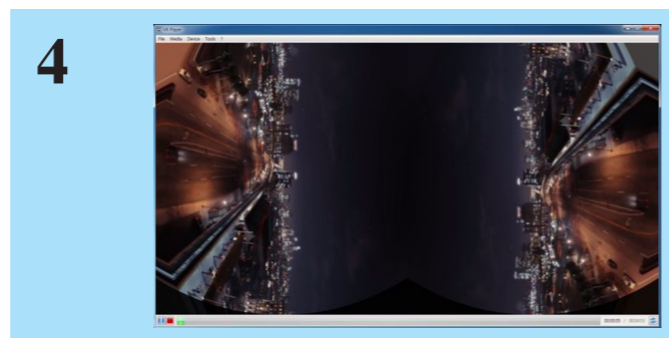
Using the Open Stream menu, you can enjoy a Youtube VR video with LG 360 VR (R100).



Select "with VLC" from Open Stream menu.

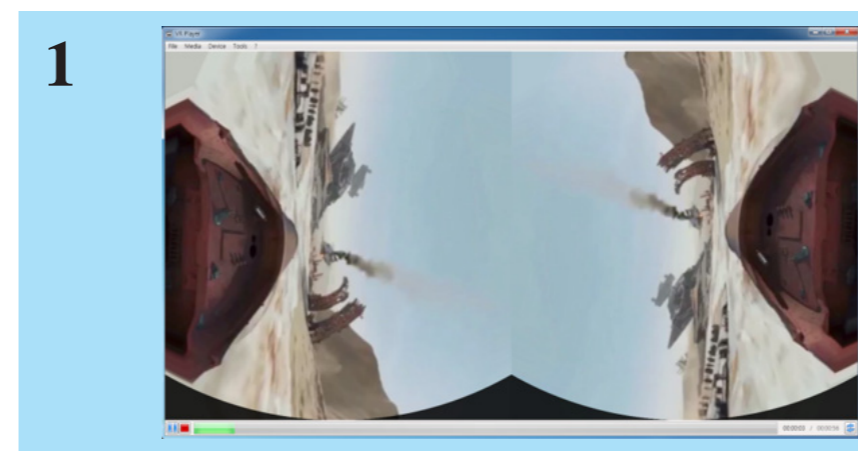


Enter copied URL into URL.

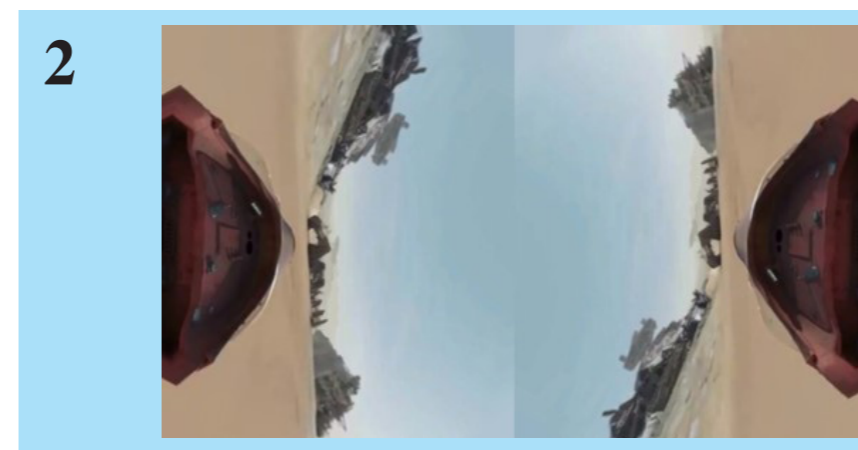


Sound Setting

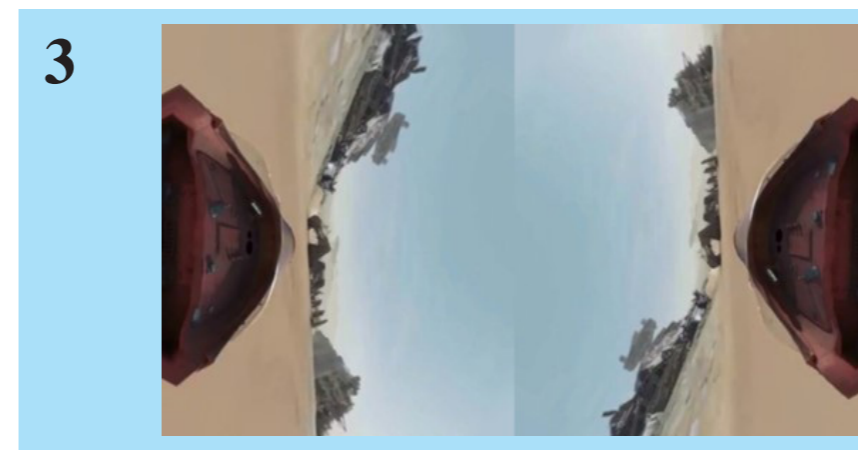
Please connect your headset into phone jack of LG 360 VR (R100). Please follow below steps to set "Sound" on your PC.



Video Clip will be activated.



Double-click on the video screen with your mouse to play in full screen



Please wear LG 360 VR (R100), you can see the VR display



Seven Star Works Co.,Ltd.

12F, ACE HIGH-END 8, 84 Gasan-digital 1-ro, Geumcheon-gu,
Seoul, 08590, KOREA

TEL : +82-70-8668-6611, FAX : 82-2-6123-3201,

E-mail : sales@tvlogic.co.kr,

<http://www.tvlogic.tv>